



**Connaught Mansions, Coldharbour Lane, SW9**

3 bedroom flat to let

**£692 Per Week**

Furnished

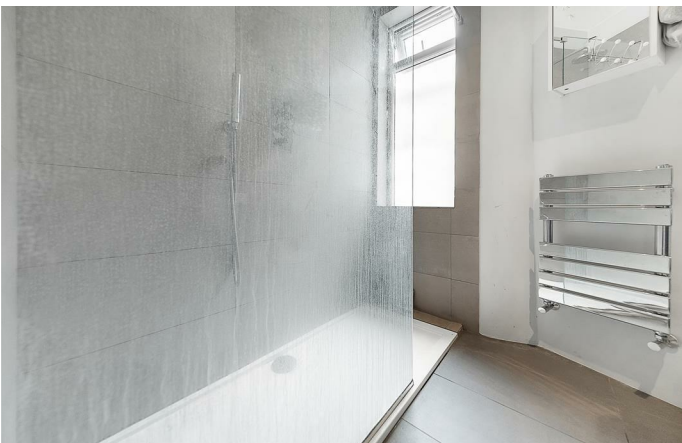
## Property Details

A stunning , spacious and bright three bedroom flat with access to a beautiful shared roof garden - situated conveniently around a three minute walk from Brixton Tube Station. This lovely flat comprises a generous kitchen/ living area , three double bedrooms and a sleek modern bathroom. Living here you also have access to a shared roof garden , perfect for warm summer evenings. You are also very close to main transport links , within a short walk to the station and around a twelve minute walk from Brockwell Park.

## Features

- Three Bedrooms
- Shared Roof Terrace
- Furnished
- Light and Airy
- Spacious

Council tax band C      EPC rating D (57)





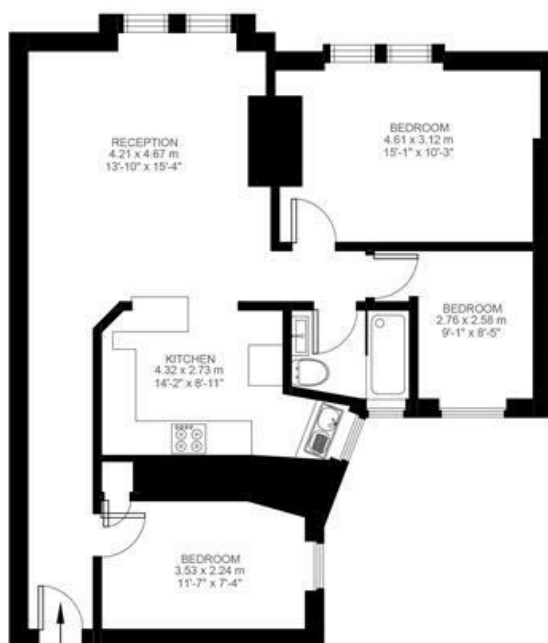
## Coldharbour Lane

### 3 Bedroom Flat

Approx internal area:

**789 sqft 73 sqm**

While we do try our very best, floor plans are produced as a guide only and we take no responsibility for the precise accuracy with which any property is represented



Third Floor



Connaught Mansions, Coldharbour Lane, SW9

